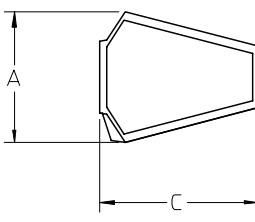
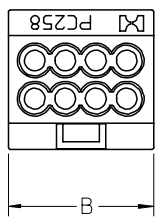
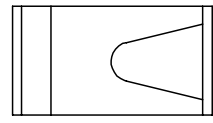
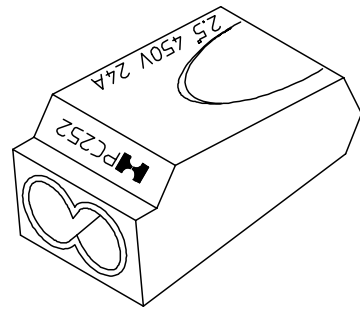
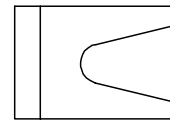
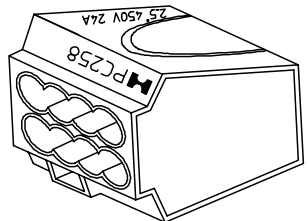
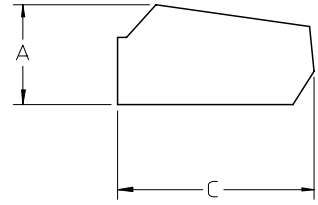
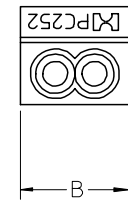


MATERIAL NUMBER	ENGINEERING NUMBER	COLOR INSERT	SOLID WIRE RANGE AWG	PORTS	DIM A	DIM B	DIM C
194300001	19430-0001	RED	12-22	2	.37/9.5	.41/10.5	.77/19.5
194300002	19430-0002	ORANGE	12-22	3	.37/9.5	.53/13.5	.78/19.7
194300003	19430-0003	YELLOW	12-22	4	.37/9.5	.68/17.2	.78/19.7
194300004	19430-0004	GRAY	12-22	5	.37/9.5	.83/21.1	.78/19.7
194300005	19430-0005	BLACK	12-22	8	.66/16.8	.69/17.5	.75/19.0



PORTS 8



PORTS 2,3,4,5

REF NOTES:

- 1.) CURRENT: 24A(VDE)
- 2.) VOLTAGE: UL-600V, VDE-450V
- 3.) WORKING TEMP: -30°C TO 105°C
- 4.) HOUSING MATERIAL: UL 94V-2 FLAME RETARDANT THERMOPLASTIC
- 5.) WIRE STRIP LENGTH: APPROX. .45/11.0
- 6.) UL FILE NO. PENDING.
- 7.) INTERNATIONAL APPROVALS: CE, VDE, FIMKO, KEMA, CEBEC

EC NO: ETC2005-0065 DRWN: JLOMASTR2004/09/28 CHKD: 2004/09/28 APPR: RDEROSS 2004/09/28	QUALITY SYMBOLS ▽ = 0 ▽ = 0	GENERAL TOLERANCES (UNLESS SPECIFIED)		SCALE 1:1	DESIGN UNITS INCH	THIRD ANGLE PROJECTION	REVISE ON CAD ONLY		
			mm	INCH	DIMENSION STYLE IN/MM		TITLE PUSH-IN WIRE CONNECTOR 12-22AWG		
		4 PLACES	± ---	± ---	DRAWN BY B.RUPERT	DATE 11/13/03	MOLEX INCORPORATED		
		3 PLACES	± ---	± ---	CHECKED BY J.PAWLIC	DATE 11/13/03			
2 PLACES	± ---	± .020	ANGULAR ± 1 °		APPROVED BY R.DEROSS	DATE 11/13/03	MATERIAL NO. SEE CHART	DOCUMENT NO. SD-19430-001	SHEET NO. 1 OF 1
1 PLACE	± 0.51	± ---	DRAFT WHERE APPLICABLE		THIS DRAWING CONTAINS INFORMATION THAT IS PROPRIETARY TO MOLEX INCORPORATED AND SHOULD NOT BE USED WITHOUT WRITTEN PERMISSION				
		MUST REMAIN WITHIN DIMENSIONS							